



ICC-Standard no. 126/1
ISO 7973
AACC Method no. 22-10.01

Brabender® Amylograph®-E

For measurement of gelatinization properties and enzyme activity of flour and whole meal



SOFTWARE UPGRADE



New software - now available
Track your measurements from anywhere and anytime with the MetaBridge Controller.



... where quality is measured.

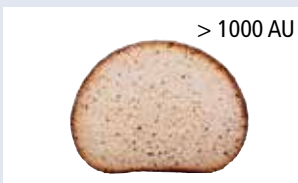
Amylograph-E



The baking properties of flour depend on the gelatinization of the starch and on the enzyme activity (α -amylase) in the flour. The Amylograph-E analyzes wheat, rye, maize, and rice flour and enables

- Assessment of the flour quality
- Suitability of the flour for various applications
- Measurement of the baking characteristics of flours
- Assessment of special flours
- Control of enzyme addition

Influence of the enzyme activity (α -amylase) on the bread quality



Principle

A suspension of flour and distilled water is heated with a constant heating rate of 1.5° C/min within a rotating bowl. Depending on the viscosity of the suspension, a measuring sensor reaching into the bowl is deflected. This deflection is measured as a function over time, i. e. vs. temperature, and recorded on-line.

Evaluation:

- Beginning of gelatinization [°C]
- Gelatinization maximum [AU]
- Gelatinization temperature [°C]

Advantages

The use of the **Amylograph-E** provides the following advantages:

- Shape of curve provides additional information
- During the test the influence of enzymes can be observed
- Reference curve
- USB operated

Special software

- **Data correlation program:** Up to 10 curves can be shown and evaluated simultaneously within one chart
- **Universal evaluation profiles:** Beside the standard evaluation with peak viscosity, own evaluation profiles can easily be programmed and used. These profiles can include for example areas, peaks, fixed points, drops, etc.

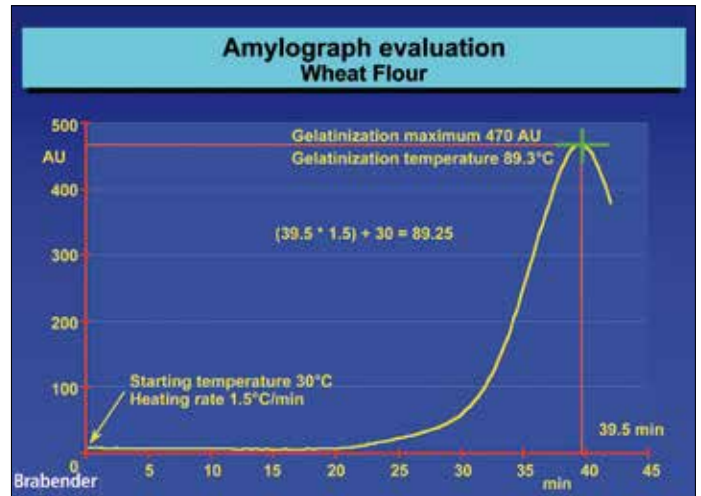
Further Method

- AACC method No. 22-12.01

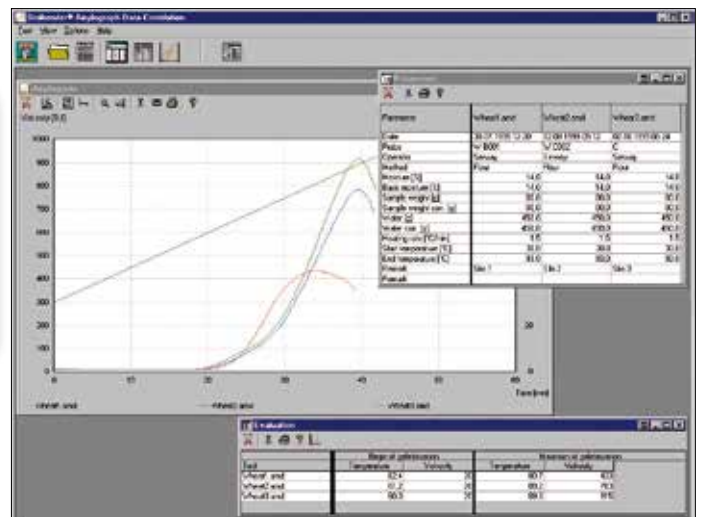


Brabender® GmbH & Co. KG

Kulturstr. 49-55 · 47055 Duisburg · Germany
Phone: +49 203 7788-0
food-sales@brabender.com
www.brabender.com



Amylogram



Data correlation program

Amylograph-E	
Mains connection	230 V; 50/60 Hz + N + PE; 2.8 A 115 V; 50/60 Hz + PE; 5.6 A
Heating rate	Standard: 1.5° C/min adjustable 0.1...3.0° C/min
Sample volume	approx. 550 ml
Speed	75 min ⁻¹
Dimensions (W x H x D)	560 x 890 x 430 mm
Weight	approx. 30 kg net



Brabender agencies all over the world.
© 2017 Brabender® GmbH & Co. KG
All trademarks are registered.
Subject to change of design and technical modification without notice.